

WELDING

POSITIONERS AND ACCESSORIES



*“Designed by
Pipe Welding Professionals”*



INDUSTRIES, INC.

Team Industries' welding positioners are designed in accordance with "Lean Manufacturing" concepts and are available to all users interested in economical, high quality pipe welding. Team's welding positioners were designed to satisfy the need for the highest quality and peak efficiency in pipe welding. Our positioner designs are developed from the input of

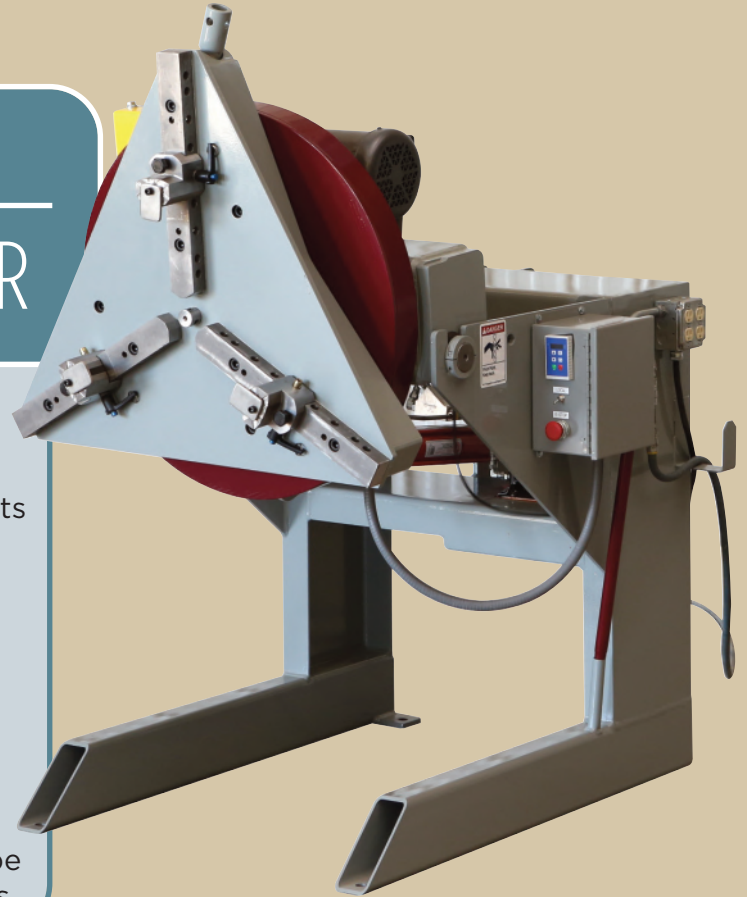
Team's highly skilled pipe welders, maintenance personnel, and engineers. Once your welders use a Team positioner, we are confident they will prefer our positioner over any other on the market. Team Positioners provide welder convenience, improved welder ergonomics and increased efficiency, along with built-in safety features.

4,000 LB.

GENERATION III POSITIONER

Features:

- 4,000 lb capacity
- 360° rotation clockwise/counter clockwise
- 120 volt-15 amp-60 hertz electrical requirements
- Programmable acceleration and deceleration
- Bi-directional foot controller with 40' cable
- Air inlet filter/lubricator for air tool quick disconnects
- RPM Range 0.183 to 3.529
- 30,000 inch pounds rotational torque
- Four 120V outlets
- Designed for years of low-cost maintenance
- 12 month warranty
- Designed and built by Team's highly skilled pipe welders, maintenance personnel, and engineers



Weather proof control cabinets for outdoor use



Headstock tilts 135 degrees



Four airtool quick disconnects



4,000 LB.

GENERATION IV POSITIONER



Variable Height Positioning

- Hydraulic height adjustability significantly increases through put and efficiencies.
- Hydraulically actuated system provides trouble free, smooth height adjustment.
- Hydraulic height adjustability increases safety, productivity & Welder ergonomics.
- 30,000 inch pounds rotational torque
- Height Range: 2'3" to 6'

Additional Features and Accessories

- Wireless Foot Control
- Wireless Remote Hand Pendant
- "THRU Hole" Purge System
- RPM Range 0.183 to 3.529
- Team Positioner operates on 110V single phase power.
- 2:1 and 3:1 Gear Reduction for Speed and Torque Control



Features low height range for welder ergonomics



Allows height adjustment up to six feet to provide versatile use



Compatible with robotic systems

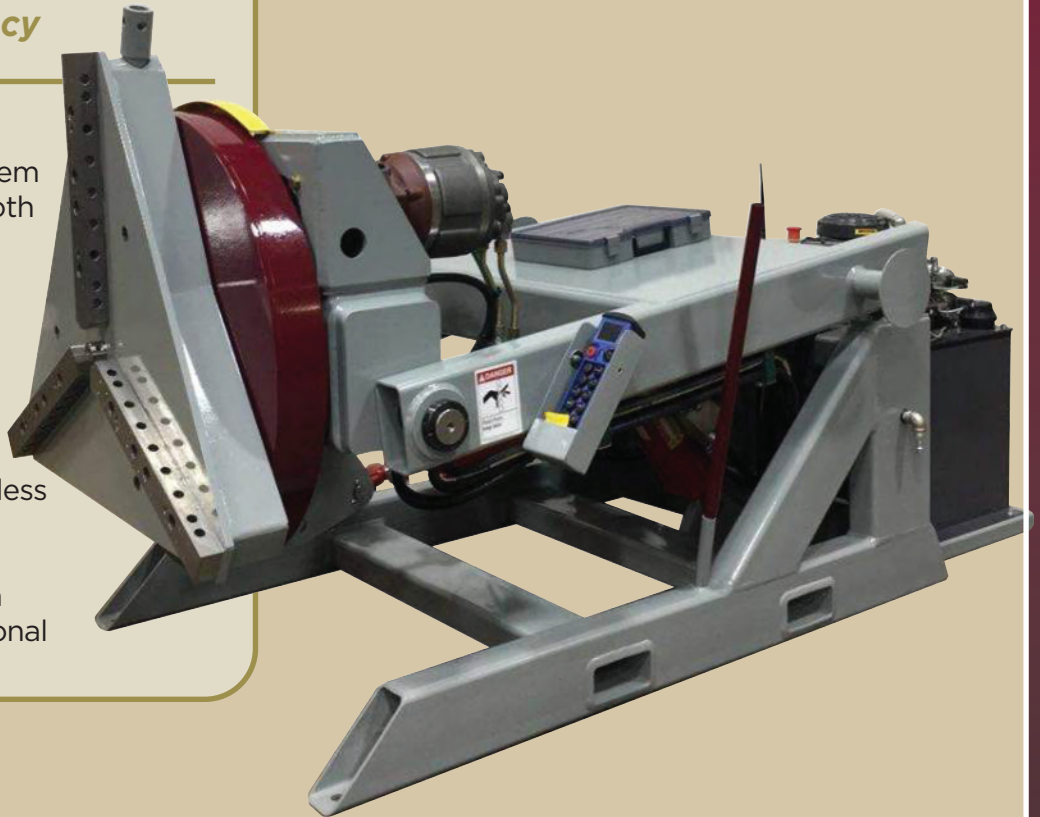
6,000 LB.

GENERATION IV XS POSITIONER

Newly designed redundant drive system to enhance safety and efficiency

Features:

- Hydraulically actuated system provides trouble free, smooth height adjustment
- Height Range: 2'3" to 6'
- Variable Rotation Torque Systems
- Gear Driven
- Low Height Range for Welder Ergonomics
- Full Function Remote Wireless Hand Pendant
- Wireless Foot Pedal
- "THRU Hole" Purge System
- 60,000 inch pounds rotational torque



Smoother rotation of off-set loads.



Ask about our rotational stop sensors.



Planetary gearboxes enhance safety.



8,000 LB.

GENERATION V XS POSITIONER



Newly designed redundant drive system to enhance safety and efficiency

Features:

- Hydraulically actuated system provides trouble free, smooth height adjustment
- Height Range: 2'11" to 8'
- Variable Rotation Torque Systems
- Gear Driven
- Low Height Range for Welder Ergonomics
- Full Function Remote Wireless Hand Pendant
- Wireless Foot Pedal
- "THRU Hole" Purge System
- 100,000 inch torque rotational torque

Additional Features:

- A redundant drive system with two gearboxes controlling the load. This will enhance the safety of the positioner by reducing the load on any single drive component as well as allowing for a secondary means of controlling the load should damage occur to one of the gearboxes or other drive components.
- A redundant drive system with two planetary gearboxes moving the load. This will enhance the efficiency of the positioner by reducing mechanical inefficiencies. A hydraulic pump unit with increased capacity. This will allow for faster cycle times of the raise / lower and tilt forward / tilt backward functions.
- A wireless hand control system will complement the wireless foot control. This will allow the operator to have a full range of positioner controls without having extra cords that clutter up the work area. All normal functions will be immediately available to the operator without the need for extra hardwiring or programming. The unit will be able to change from a hand welding workstation, to a sub arc workstation, to a plasma cutting workstation, to a pipe fitting workstation with no extra set up time for the controls.



Capacity to turn large tanks/vessels.



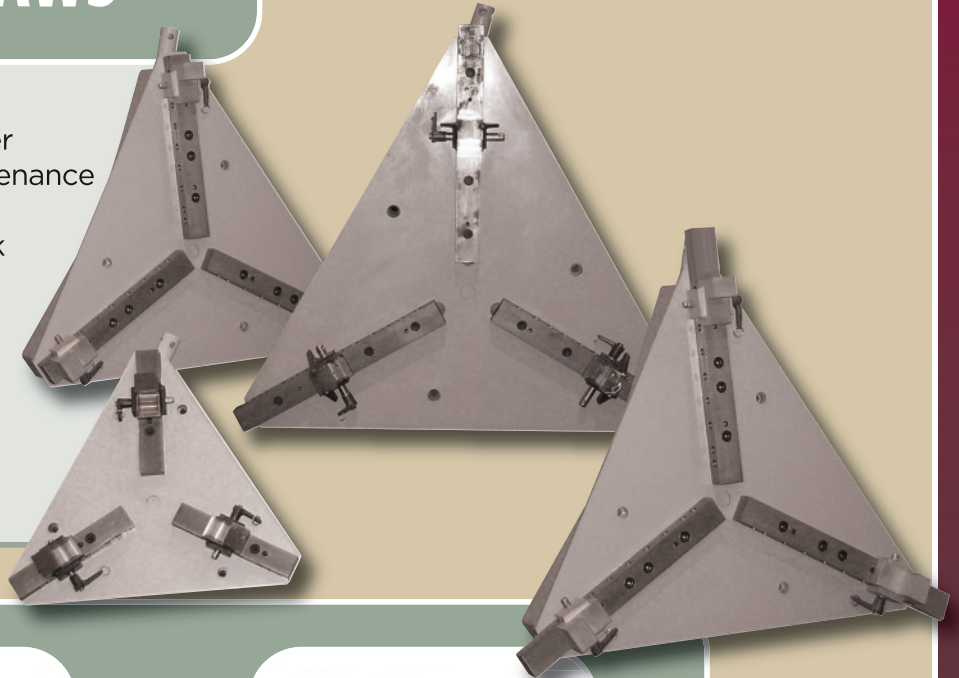
Planetary gearboxes enhance safety.

ACCESSORIES

GRIPPERS AND JAWS

Features:

- Retrofit your existing positioner
- Engineered for low-cost maintenance
- Self-centering jaws
- Three standard jaws with quick disconnect pins
- Five gripper models available:
 - Model 24 - 1" to 24"
 - Model 45 - 1" to 40"
 - Model 50 - 1" to 52"
 - Model 60 - 3" to 60"
 - Model 72 - 8" to 78"



Designed specifically with safety in mind. Steel-hardened inserts increase gripper clamping capacity.



Steel Hardened 1-pc. Insert Jaw with locking plate and leveling cap screw



Small Bore Adapter with Steel-Hardened 1-pc. Insert Jaw



Standard Smooth Jaw



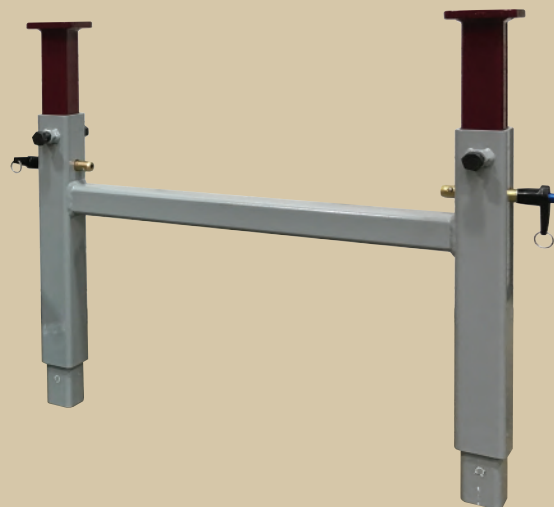
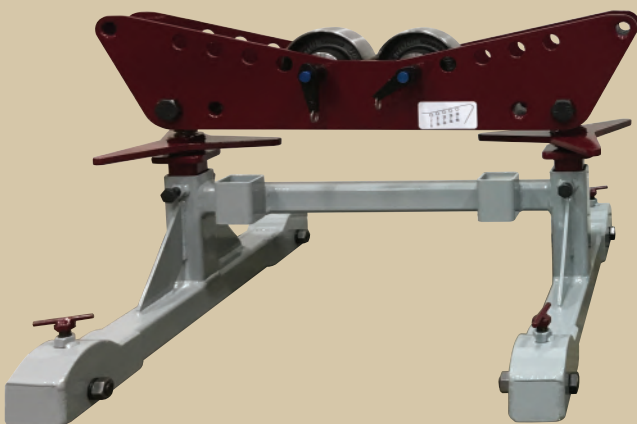
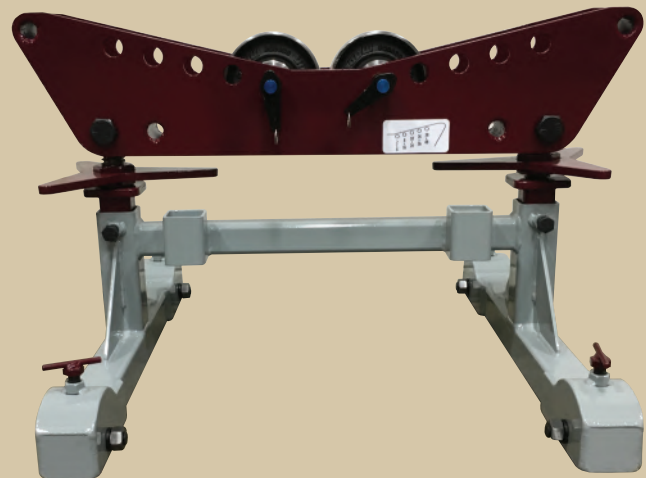
Extended Length Jaw with Carbide Inserts

ACCESSORIES

ADJUSTABLE HEIGHT STANDS

Features:

- Equipped with steel rollers
- 2" to 48" diameter Pipe
- Height range: 22-3/4" to 52"
- Wheels lock in place for added safety



WHAT OUR CUSTOMERS ARE SAYING

"X-raying 1,000 pipe welds per month, where quality and production are monitored daily, **we can't afford not to use a Team positioner.**"

Tony Fischer
X-ray Welder Foreman
U.A. Authorized ATR

"A weld positioner **designed and built by pipe welding professionals** to meet the needs of pipe welders."

Walter Sperko
Professional Engineer
Greensboro, North Carolina

"At Newmech Companies the largest Annual Fab Shop Maintenance expenditure was Welding Positioner repair. After purchasing one Team Positioner & Gripper we purchased eleven more for the following reasons:

Reliability, Maintenance Free, and very User Friendly."

Mark Habermann
Newmech Companies
St. Paul, Minnesota

"We currently use both the TEAM Generation III and Generation IV positioners in our fabrication shops. **Having a good positioner in a fabrication shop is a must regardless of shop size.**

A good positioner is like adding another Fitter to your project without the added expense."

Ned T. Hawkins
W. Soule
Kalamazoo, MI

"Our new Gen V XS positioner is an impressive American built machine.

It's heavy duty design and build quality gives our welders the confidence they need to safely turn out large bore pipe.

In addition, the wireless foot pedals are a huge hit! We are going to upgrade our older Gen III and IV positioners to wireless too."

Kevin Bowyer
ACCO Engineered Systems
San Leandro, CA

For more information or to schedule a demonstration,
contact us at one of these locations:

Corporate Headquarters: 1200 Maloney Rd. P.O. Box 350 Kaukauna, WI 54130 Phone: (920) 766-7977 Fax: (920) 766-0486 www.weldpositioner.com	Team Fabricators, LLC. 650 Main Ave. Port Arthur, TX 77642 Phone: (409) 962-0266
--	--



INDUSTRIES, INC.